



Still Spirits
Auckland, New Zealand

www.stillspirits.com

Reorder# 800017

EZfilter

INLINE FILTER



**The EZ Filter is a new development in alcohol filtration.
It uses a specially formulated solid activated carbon
cartridge to remove unwanted flavours from distilled
alcohol.**

**The cartridge eliminates the need to handle powdered or granulated carbon.
The cartridge's porous design allows the spirit to pass through and the un-
wanted flavours to be absorbed by the activated carbon.**

Assembly

The EZ Inline Filter is supplied with the cartridge and washers.

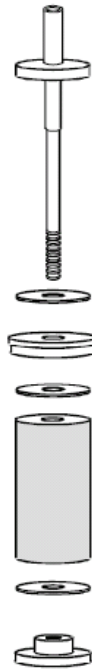
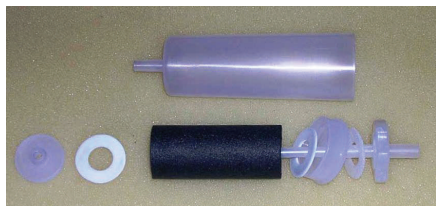
Remove the cartridge from its plastic wrap.

Place the components onto the spindle in the following order:

1. Washer
2. Top cap
3. Washer
4. Cartridge
5. Washer
6. Bottom cap

Screw up by hand, taking care not to over tighten.

Press the housing onto the top cap



Operation

1. Connect the filter to the tap on the reservoir (not supplied) with a short length of clear PVC tube. The tube should not be more than 100mm long.
2. Pour 1 litre of clean water into the reservoir, open the tap and allow the water to drain through the filter. This is necessary to remove mineral salts from the carbon and to flush out any carbon dust.
3. Close the tap and add your spirit to the reservoir.
4. Adjust the alcohol level to under 50% with clean water. Check this with a Spirit Hydrometer or Alcometer.
5. Open the tap and allow the spirit to pass through the filter into a collecting pail.

Hints & Tips

- One cartridge is suitable for one batch of spirit from a 25 litre still (up to about 8L of 50% spirit.) A fresh cartridge should be used for each batch.
- The washers are reusable but should be replaced when they flatten with use and no longer recover to normal thickness.

Mineral salts

Mineral salts are present in the ingredients used for manufacturing activated carbon. If these are not flushed out they can be absorbed into the spirit. Later these salts can become insoluble in the spirit, especially at lower temperatures, and can form a fine sediment or haze. These salts are not dangerous, but you do not want them in your spirit as they can form crystals or a haze in the spirit. This is why we recommend flushing the filter with clean water before use. If a haze forms it will sediment out over a few days and you can decant your spirit off. If this occurs you should increase the water flush volume next time.

Purification

Activated carbon is prepared in a manner which causes the carbon crystals to become porous and develop a very large surface area. One gram of activated carbon may have 500 – 1500 square metres of internal surface area. This large surface area and the many internal pores in the carbon are able to adsorb many different chemical compounds including those which cause unwanted flavours in your spirit. The absorption process is very complex and depends on concentrations, molecular weight etc. In the case of alcoholic spirit the process works best if the alcohol concentration is 50% or less. This is why we recommend adjusting the alcohol level before purification.